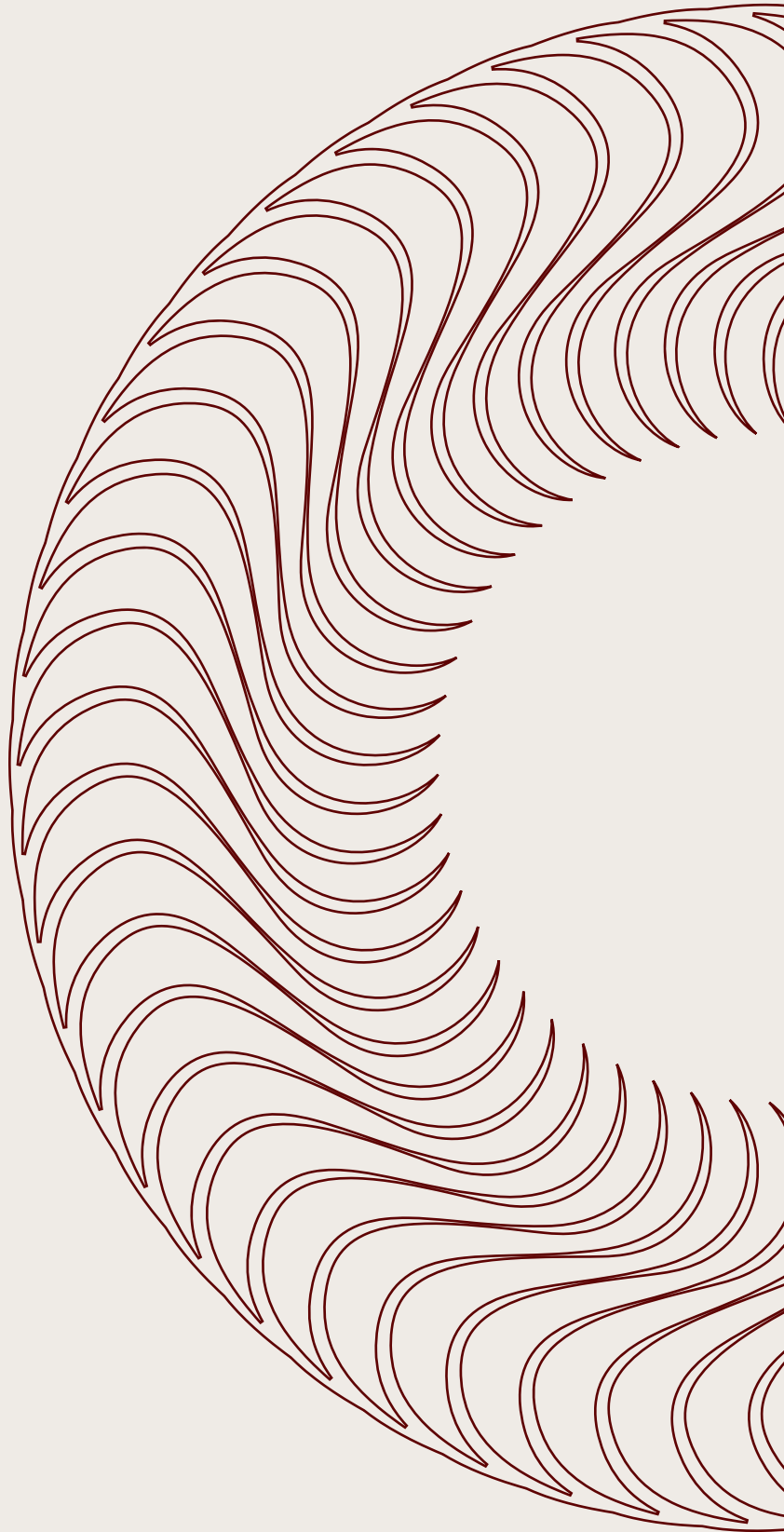


# ATHENIA II

R E S I D E N C E S



Developed By:







# URBAN SANCTUARY

LAETVISIA

ATHENA II

ARTIST'S IMPRESSION



# PLANETVISION PROMISE



Our promise is simple - every Planetvision property is an unforgettable experience.

Our forward - thinking mentality ensures your home is more than just a prestigious address.

It becomes a testament to a happier, healthier life, delivering an exceptional lifestyle for you, your family, and friends.

ARTIST'S IMPRESSION





# INTRODUCING ATHENIA II

ATHENIA II presents a curated collection of 11 contemporary apartments, offering one-, two-, and three-bedroom layouts tailored for modern urban living.

Positioned in a prime locale with seamless access to shopping, dining, and entertainment, ATHENIA emerges as the ideal residential destination for individuals pursuing unparalleled quality and convenience in their lifestyle.

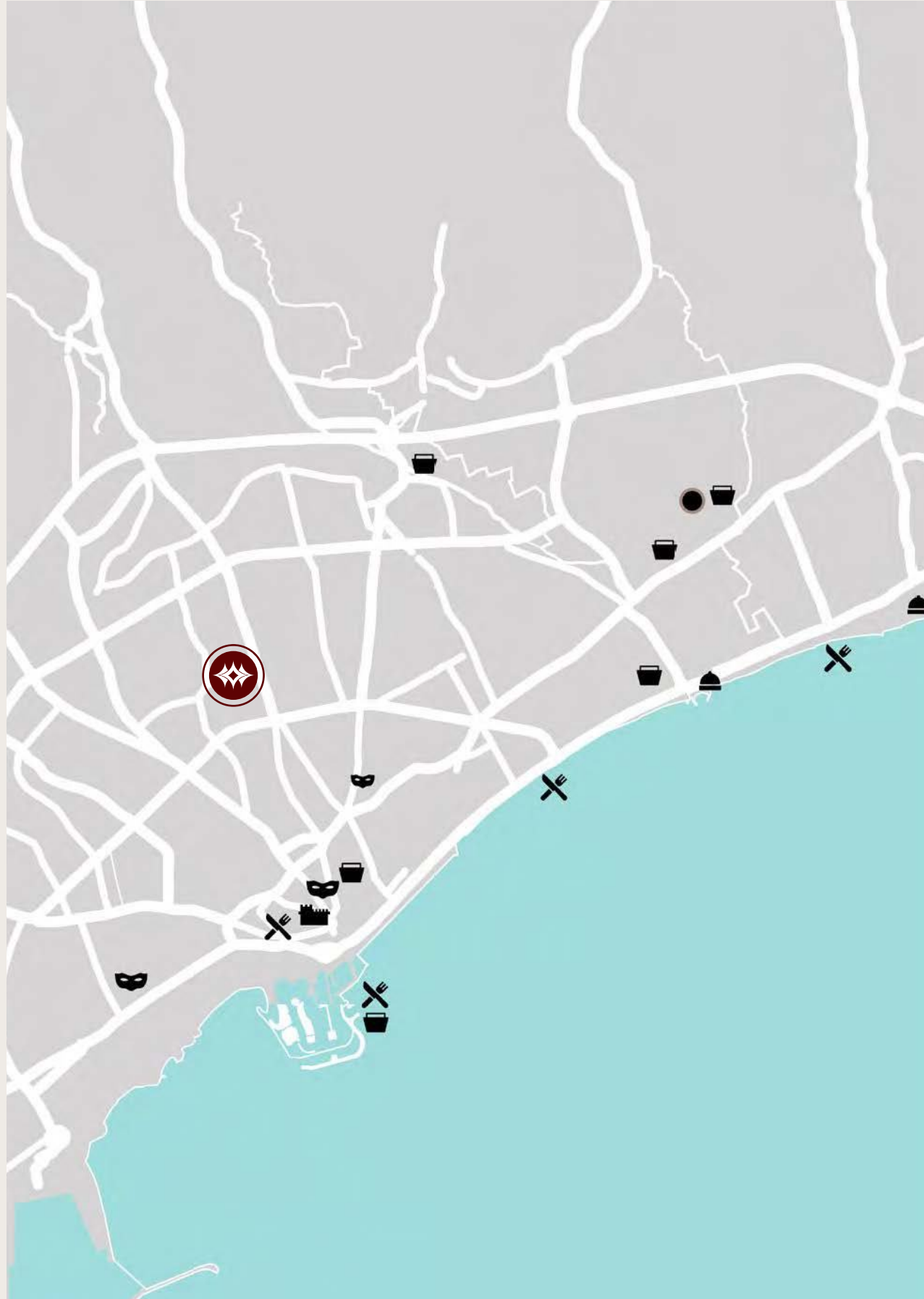
Nestled near Agia Zonis, it's more than an attractive opportunity - it's the perfect blend of chic living and a gateway to long-term returns.



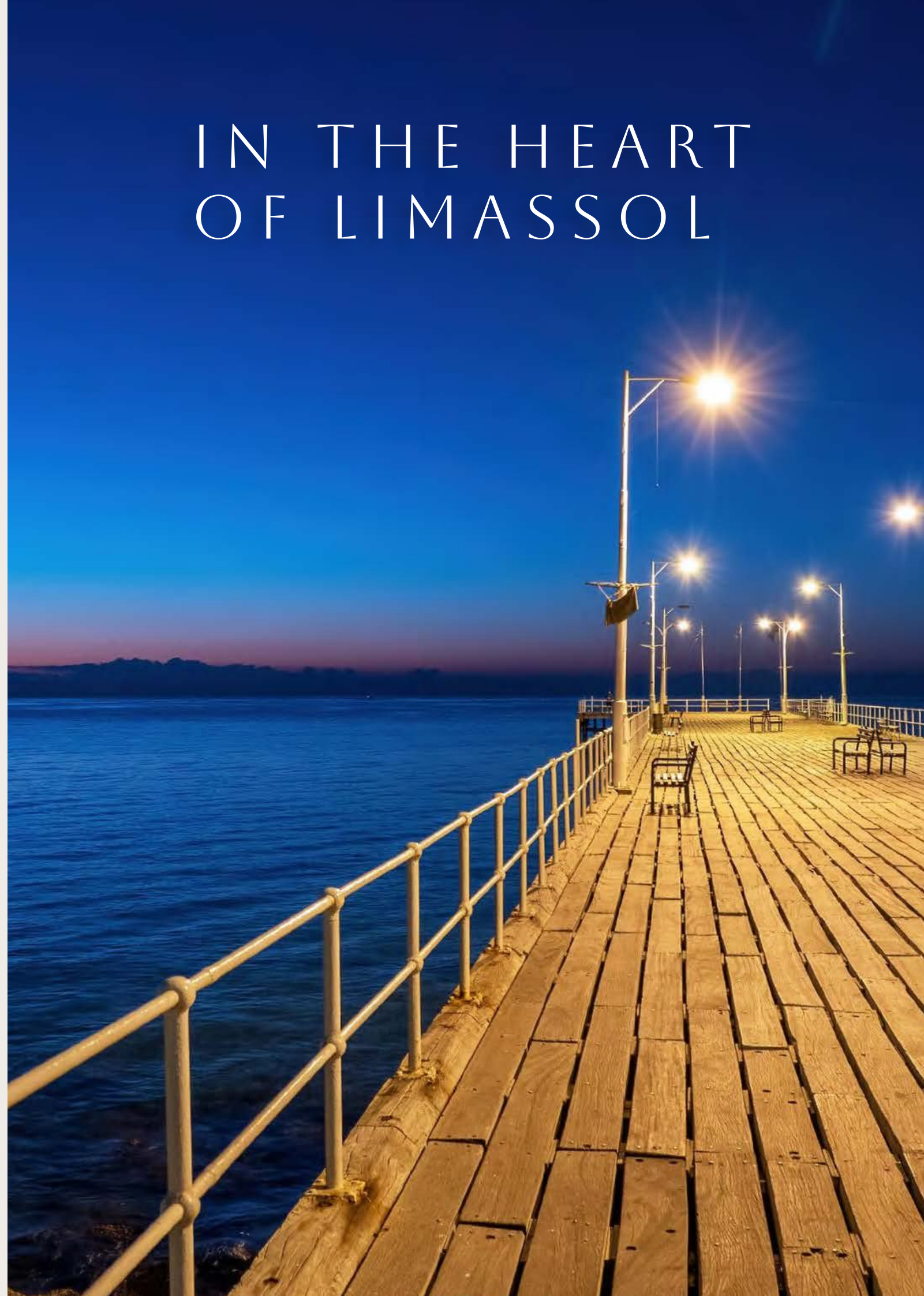


# NOMAD DELUXE

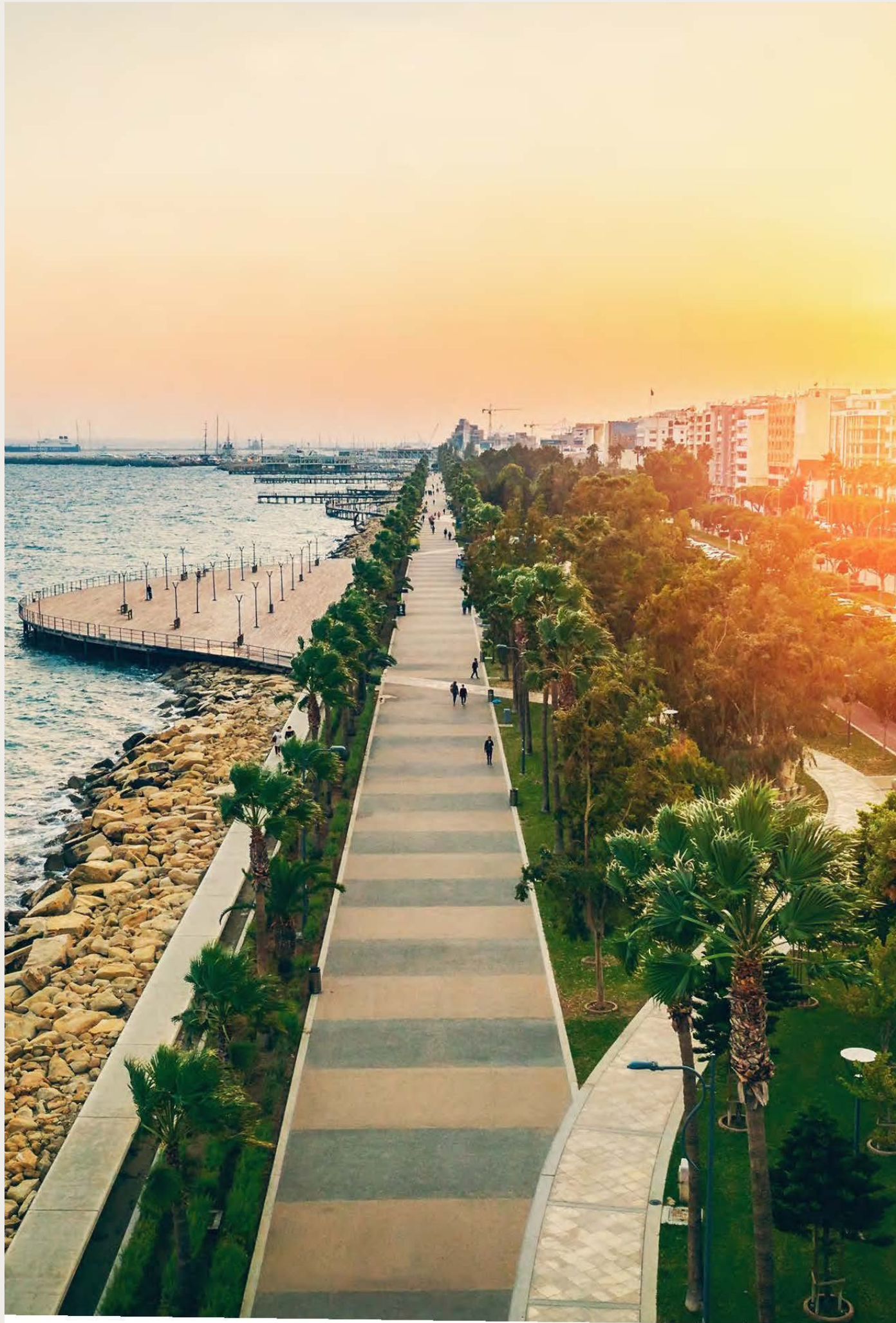




# IN THE HEART OF LIMASSOL







## LOCATION

The prime location in the vibrant neighborhood of Agia Zonis ensures easy access to all the city has to offer, from renowned dining establishments to cultural hotspots.

An area of immense growth and transformation, a vibrant place to live, work and play, plus, with easy access to public transportation and major roads, getting around the city is a breeze.



# YOUR HOME, AN ARTWORK

Athenia Residences near Ag. Zonis area is home to those who gravitate toward the finer things.

Those who live their lives with an inherent sense of style and believe that simplicity is the ultimate sophistication.

Our exclusive rooftop garden offers a serene escape with a private jacuzzi spa and BBQ area - your personal oasis in the heart of the city.



ARTIST'S IMPRESSION





PLANETVISION

ATHENA II

PLANETVISION

ATHENA

ARTIST'S IMPRESSION





MODERNITY,  
CRAFTED WITH  
ELEGANCE





DESIGNED TO  
ENHANCE AN  
ACTIVE, URBAN  
LIFESTYLE.

All the apartments have ample, comfortable interior spaces and spacious balconies.

Each unit is outfitted with modern finishes, ensuring a comfortable and convenient Living experience.



# LIST OF APARTMENTS

UNIT	FLOOR	BED	COVERED AREA SQM	COVERED BALCONY SQM	TOTAL COVERED SQM	UNCOV. VERANDA SQM	ROOF TERRACE SQM
101	FIRST	2	82	28	110	/	/
102	FIRST	1	50	14	64	5	/
103	FIRST	1	53	10	63	/	/
104	FIRST	1	51	17	68	/	/
201	SECOND	2	82	28	110	/	/
202	SECOND	1	50	14	64	/	/
203	SECOND	1	53	10	63	/	/
204	SECOND	1	51	17	68	/	/
301	THIRD	3	137	19	156	/	56
302	THIRD	2	77	18	95	/	/
303	THIRD	1	51	17	68	/	/





**GROUND FLOOR**





FIRST FLOOR

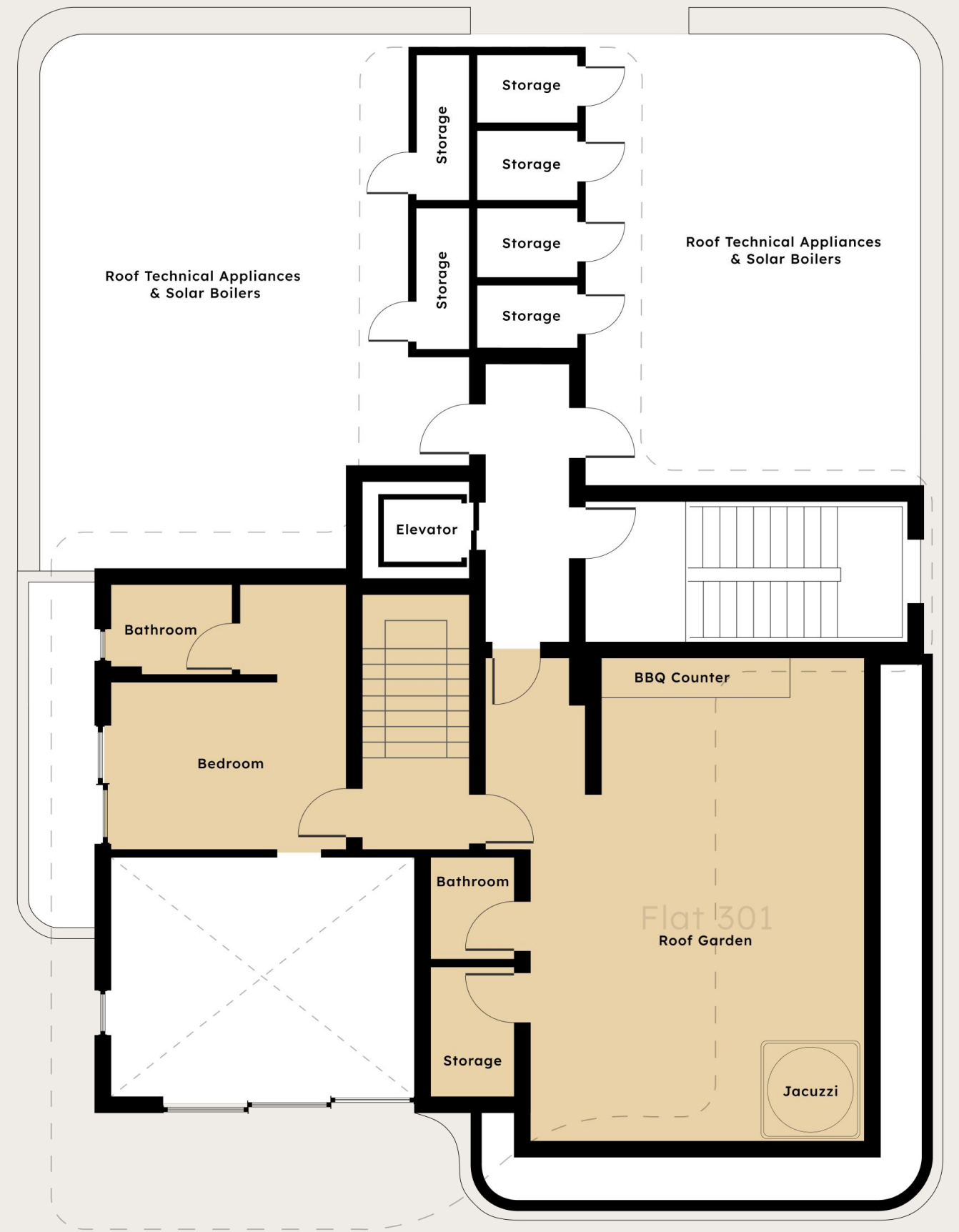


SECOND FLOOR





THIRD FLOOR



ROOF GARDEN







# THE ART OF LIVING WELL











PLANETVISION  
PROPERTIES

DESIGNED FOR LIFE

Planetvision, a boutique property developer and asset manager located in Limassol, distinguishes itself through its distinctive strategy of creating design-focused, top-tier properties.

We identify as “dreamers and doers” with purpose: not only can we achieve what is considered possible, but we also realize what others deem impossible. Planetvision provides exclusivity and extraordinary lifestyle options within upscale environments.



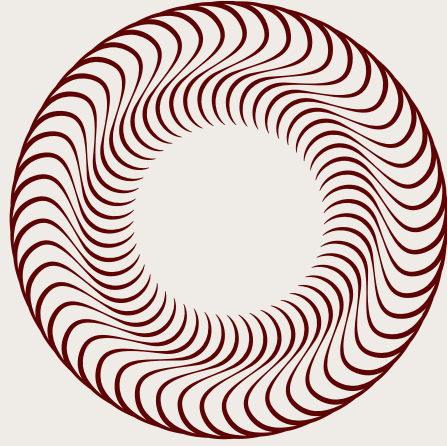




## DISCLAIMER

Please note that all aspects of the design for ATHENIA are continuously reviewed and PLANETVISION GLOBAL LTD reserve the right to make alterations to the design without notice. All images are indicative only. These particulars are prepared for the guidance only of prospective owners, tenants and occupants. They are intended to give a fair overall description of the property but are not intended to constitute part of an offer or contract. Any information contained herein (whether in the text, plans or images) is given in good faith and should not be relied upon as being a statement or representation of fact. Nothing in these particulars shall be deemed to be a statement that the property is in good working condition or otherwise, nor that any services or facilities are in good working order. Any areas, measurements or distances referred to herein are approximate only. Descriptions of a property are inevitably subjective and the descriptions contained herein are used in good faith as an opinion and not by way of statement or fact. Neither PLANETVISION GLOBAL LTD nor any of its employees have any authority to make, or give any warranty whatsoever in relation to this property.





# ATHENIA II

R E S I D E N C E S



PLANETVISION  
PROPERTIES

+357 7777 8727