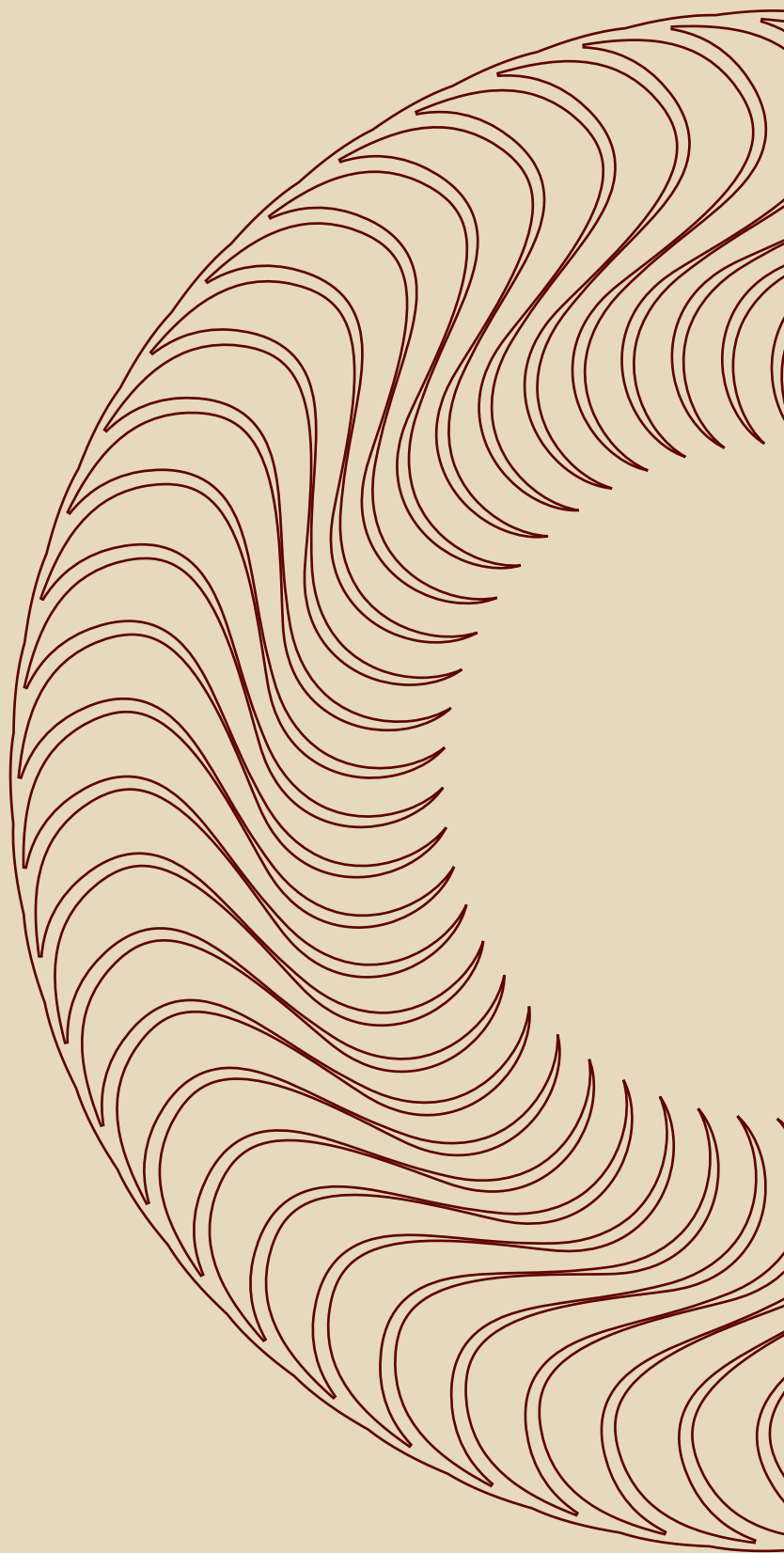


# ATHENIA



DEVELOPED BY  
PLANETVISION



# URBAN SOPHISTICATION





# PLANETVISION PROMISE



Our promise is simple – every Planetvision property is an unforgettable experience.

Our forward – thinking mentality ensures your home is more than just a prestigious address.

It becomes a testament to a happier, healthier life, delivering an exceptional lifestyle for you, your family, and friends.





# INTRODUCING ATHENIA

**ATHENIA** presents a curated collection of 11 contemporary apartments, offering one-, two-, and three-bedroom layouts tailored for modern urban living.

Positioned in a prime locale with seamless access to shopping, dining, and entertainment, **ATHENIA** emerges as the ideal residential destination for individuals pursuing unparalleled quality and convenience in their lifestyle.

Nestled near Agia Zonis, it's more than an attractive opportunity – it's the perfect blend of chic living and a gateway to long-term returns.





ATHENA

# NOMAD DELUXE



HOTEL

CASTLE

F&B

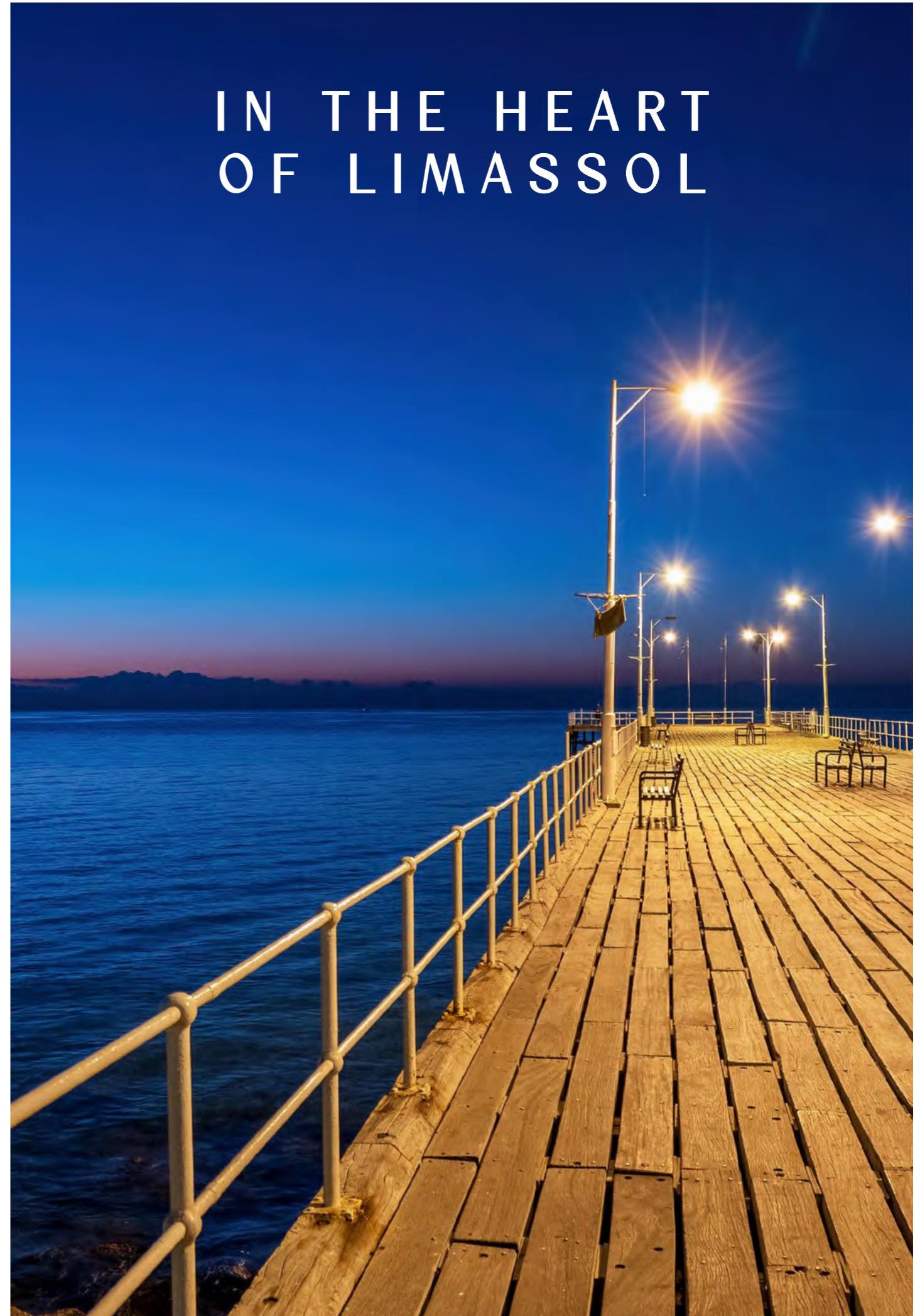
HOSPITAL

SHOPPING

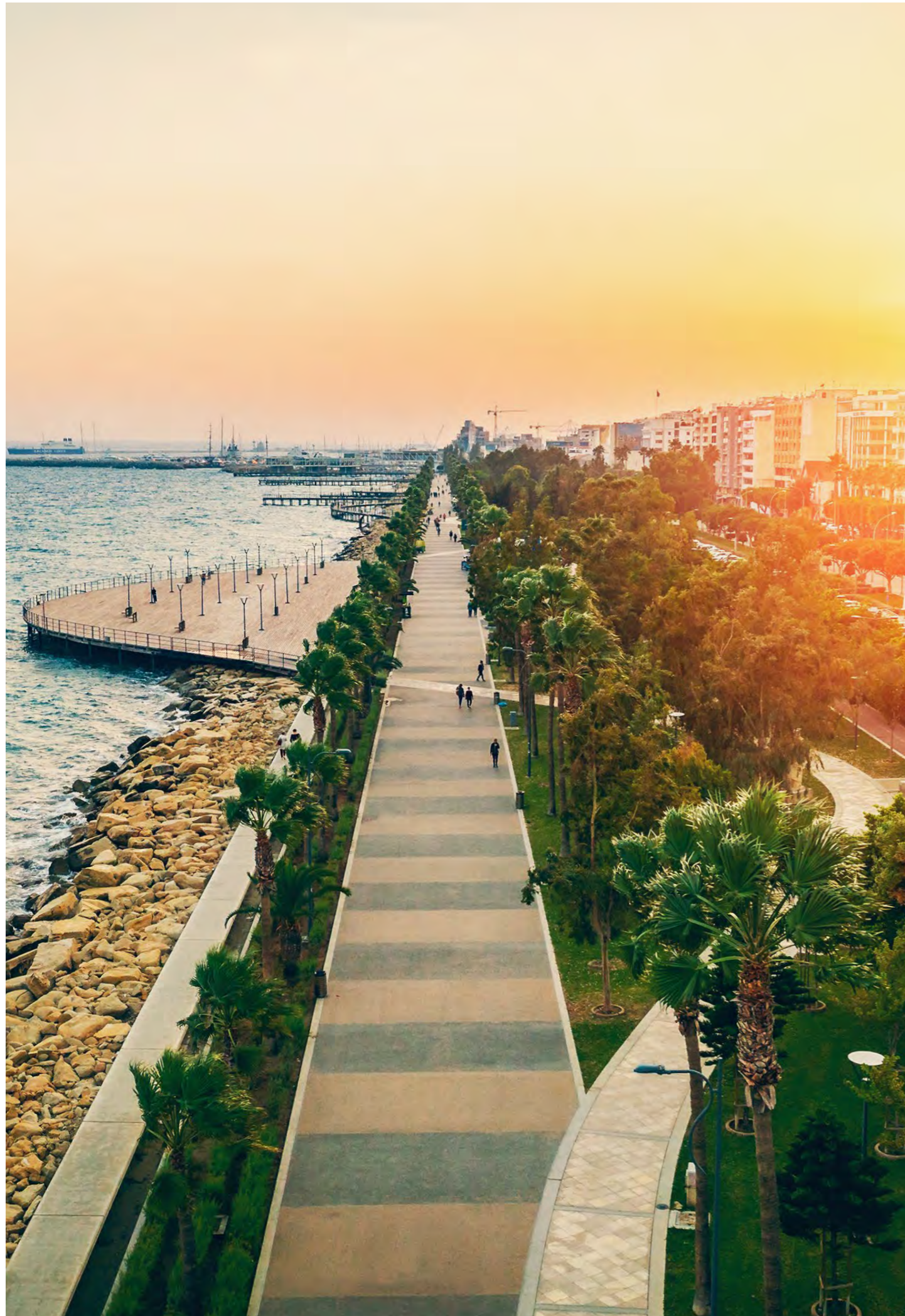
THEATRE



# IN THE HEART OF LIMASSOL







## LOCATION

The prime location in the vibrant neighborhood of Agia Zonis ensures easy access to all the city has to offer, from renowned dining establishments to cultural hotspots.

An area of immense growth and transformation, a vibrant place to live, work and play, plus, with easy access to public transportation and major roads, getting around the city is a breeze.



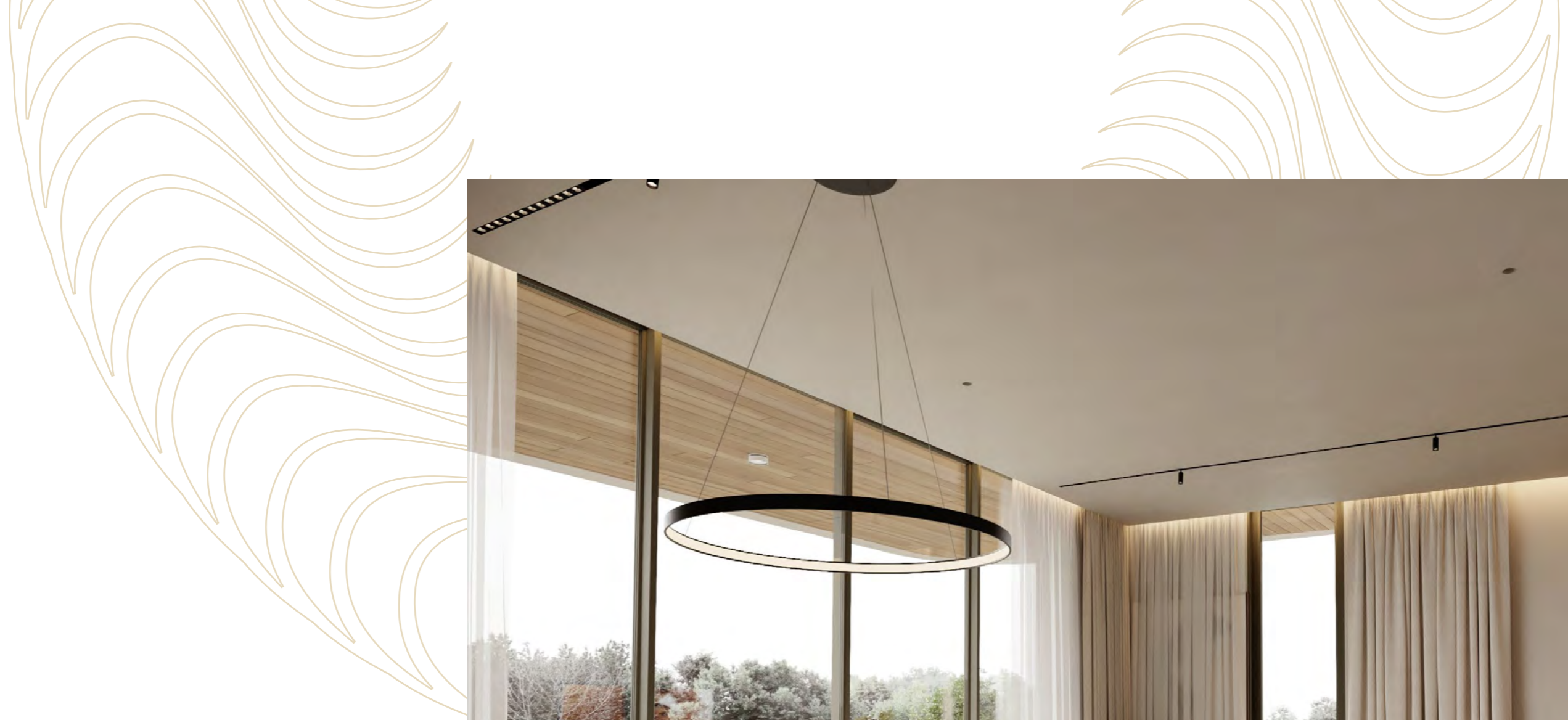
# YOUR HOME, AN ARTWORK

Athenia Residences near Ag. Zonis area is home to those who gravitate toward the finer things.

Those who live their lives with an inherent sense of style and believe that simplicity is the ultimate sophistication.







WHERE STYLE  
MEETS CITY  
CONVENIENCE





# MODERNITY, CRAFTED WITH ELEGANCE







## DESIGNED TO ENHANCE AN ACTIVE, URBAN LIFESTYLE.

All the apartments have ample, comfortable interior spaces and spacious balconies.

Each unit is outfitted with modern finishes, ensuring a comfortable and convenient Living experience.



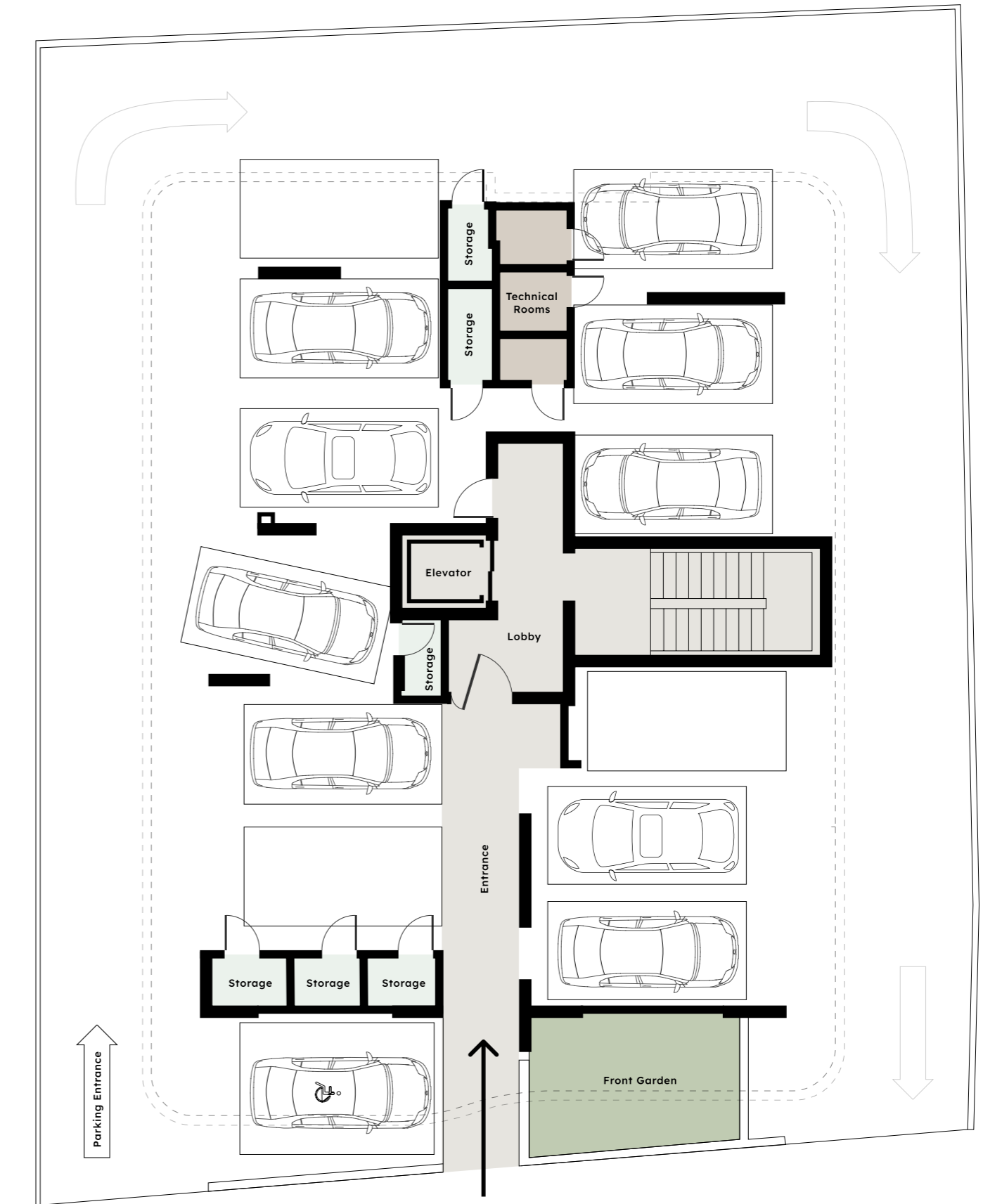


## LIST OF APARTMENTS

Flat	Floor	Bed	Flat Area	Cov. Veranda	Roof Garden	Common	Total Area
101	1	2	82	28	-	8	110
102	1	1	50	10	-	4	60
103	1	1	53	10	-	8	63
104	1	1	51	17	-	4	68
201	2	2	82	28	-	8	110
202	2	1	50	10	-	4	60
203	2	1	53	10	-	8	63
204	2	1	51	17	-	4	68
301	3	3	133	43	49	8	176
302	3	1	53	10	-	4	63
303	3	1	51	17	-	8	68







GROUND FLOOR





FIRST FLOOR

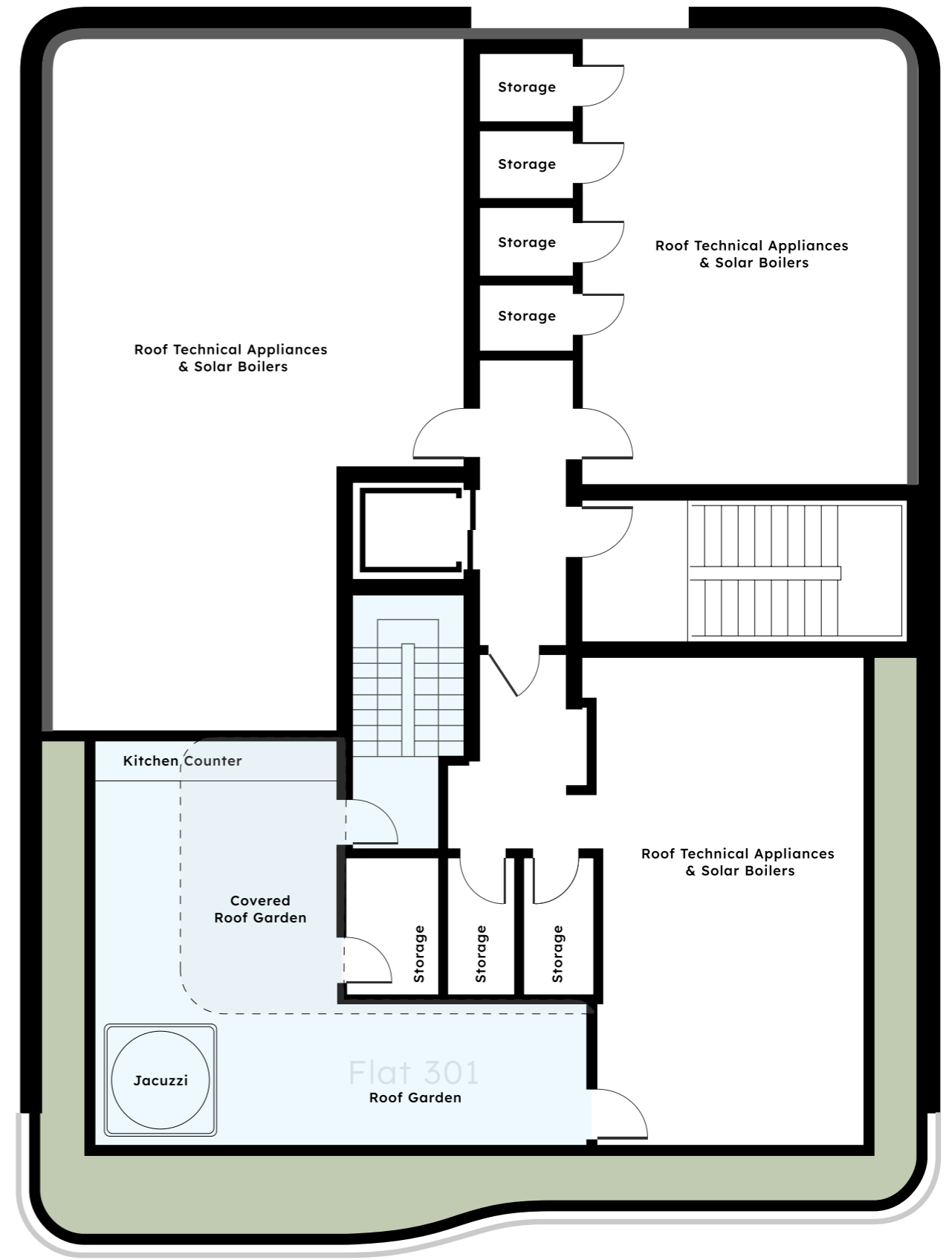


SECOND FLOOR





THIRD FLOOR



ROOF GARDEN







# THE ART OF LIVING WELL.





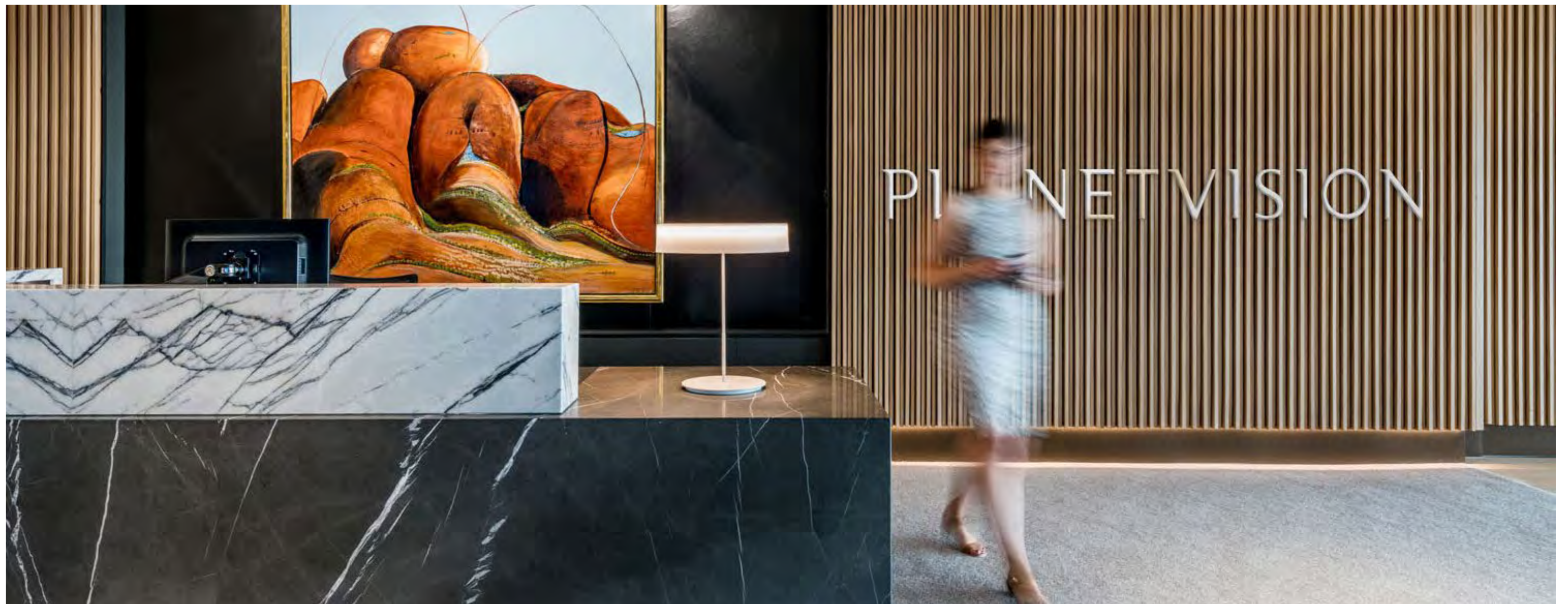




# PLANETVISION

*Sublime Living*

Planetvision, a boutique property developer and asset manager located in Limassol, distinguishes itself through its distinctive strategy of creating design-focused, top-tier properties. We identify as “dreamers and doers” with purpose: not only can we achieve what is considered possible, but we also realize what others deem impossible. Planetvision provides exclusivity and extraordinary lifestyle options within upscale environments.







# PLANETVISION

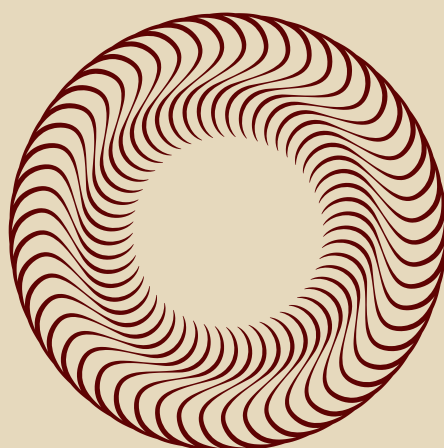
info@planetvision.net

T: 77 77 87 27

## DISCLAIMER

Please note that all aspects of the design for MUSE are continuously reviewed and PLANETVISION MUSE LTD reserve the right to make alterations to the design without notice. All images are indicative only. These particulars are prepared for the guidance only of prospective owners, tenants and occupants. They are intended to give a fair overall description of the property but are not intended to constitute part of an offer or contract. Any information contained herein (whether in the text, plans or images) is given in good faith and should not be relied upon as being a statement or representation of fact. Nothing in these particulars shall be deemed to be a statement that the property is in good working condition or otherwise, nor that any services or facilities are in good working order. Any areas, measurements or distances referred to herein are approximate only. Descriptions of a property are inevitably subjective and the descriptions contained herein are used in good faith as an opinion and not by way of statement or fact. Neither PLANETVISION MUSE LTD nor any of its employees have any authority to make, or give any warranty whatsoever in relation to this property.





ATHENIA

PLANETVISION

[www.planetvision.net](http://www.planetvision.net)

T: 77 77 87 27